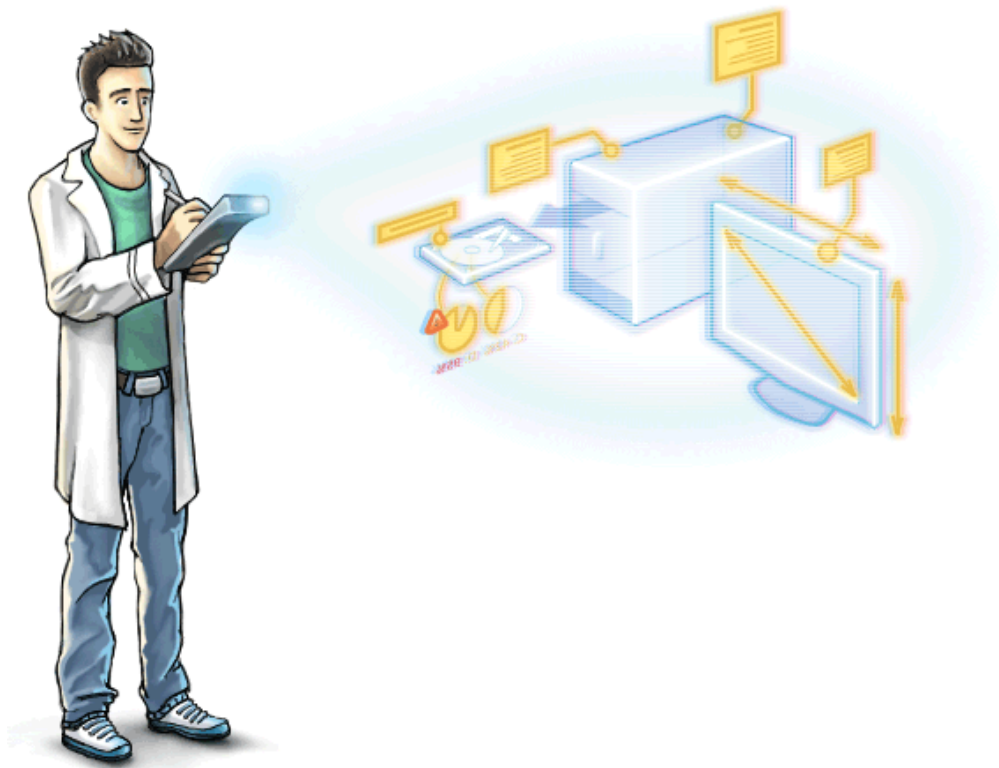


# Total Network Inventory

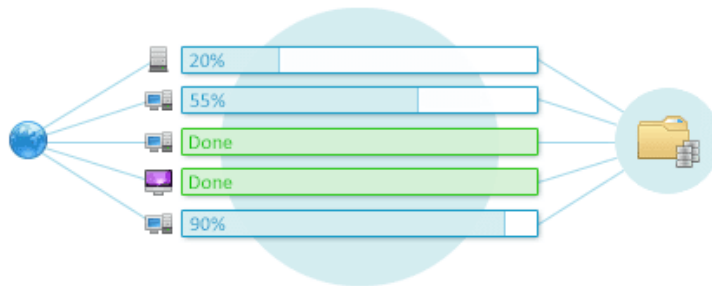
Brochure



Introducing **Total Network Inventory**, PC audit, and software inventory solution by Softinventive Lab.

## Network scanning

**Windows, macOS, Linux, FreeBSD**, and **ESX/ESXi**-based computers and servers can be scanned without preinstalled agents – you just need to know the administrator's password. Scan single nodes, network address ranges, or **Active Directory** structure.



## Inventory

Each computer only takes up a few tens of kilobytes in the centralized TNI storage. Group assets, add comments to them, and attach additional information. Total Network Inventory will show your network in all its beauty!



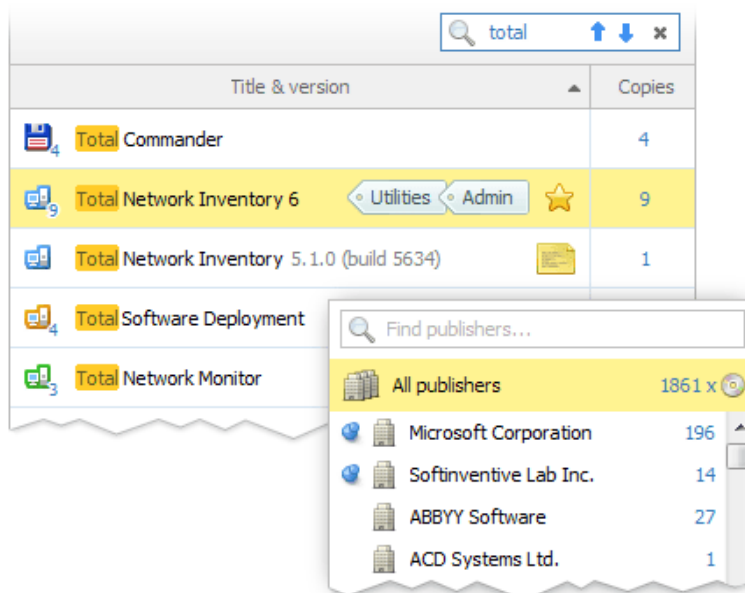
## Reports

Create flexible reports on different data categories. Build table reports with hundreds of available data fields using the convenient tool. Reports can be copied, exported, or printed, and the search feature shows the results before you even finish typing.

#	Alias	Name	Max. visible image size, "
1	Eudypates	SyncMaster 932B/191B/932B...	38 cm x 30 cm (19")
2	Earth	SyncMaster 932B/191B/932B...	38 cm x 30 cm (19.1")
3	Uranus	SyncMaster T220/T220G,Syn...	47 cm x 30 cm (22")
4	Zeus	SyncMaster T220/T220G,Syn...	47 cm x 30 cm (22")
5	Earth	Philips 273EL (27inch Wide LC...	60 cm x 34 cm (27.2")
		Philips 273EL (27inch Wide LC...	

## Software accounting

All software from your **Windows** and **Mac OS** devices is gathered in a single place with comprehensive search and filtering capabilities. Browse, organize, and discover your software and installations, star important items, assign tags, add comments, and much more. Store data on all the software licenses you own along with their parameters, license keys, expiration dates, prices, and all the accompanying documents, such as invoices and EULAs.



The screenshot shows a software accounting interface. At the top, there is a search bar with the text "total" and navigation icons. Below the search bar is a table with two columns: "Title & version" and "Copies". The table lists several software items:

Title & version	Copies
Total Commander	4
Total Network Inventory 6 <span>Utilities Admin</span> <span>★</span>	9
Total Network Inventory 5.1.0 (build 5634)	1
Total Software Deployment	
Total Network Monitor	

A dropdown menu is open over the "Total Network Monitor" item, showing a search bar "Find publishers..." and a list of publishers with their respective copy counts:

Publisher	Copies
All publishers	1861 x
Microsoft Corporation	196
Softinventive Lab Inc.	14
ABBYY Software	27
ACD Systems Ltd.	1

## Live licensing status

Make sense of all the critical data on software distribution and licensing in your network. See what software is currently licensed or not. Get complete info about licensing problems.

Installations ▲ 2 Payment accounting

License for Microsoft Windows 10.0.x Computers & keys...

License Keys 7 Limit 1 per key = 7 ▲ Problems 2 Unused 2

Computer	OS	Key	Status
Mercury	10 Pro	92STE-HP4MX-8G9BU-M4K9T	Compliant
Venus	10 Pro	C8N5A-E6XKT-MPV47-SJA29	Compliant
Earth	10 Pro	JL3TT-LXS7K-FB57R-FJV8U	Compliant
Mars	10 Enterprise	PJLM4-L5FEF-NWKUN-HVD6D	Compliant
Saturn	10 Enterprise	R85CT-9X58X-6BZ1R-9KG9E	Wrong key
Uranus	10 Enterprise	JL3TT-LXS7K-FB57R-FJV8U	Over limit
Neptune	10 Enterprise	S2L4S-X56WD-CBZE2-LSKDJ	Compliant

## Tracking

Track the software presence on specific devices. You can mark any app as a Must-have or Forbidden for specific sets of computers.

Radmin Server 3.0 ✚ 1

Must-have <span>for selected</span> <span>Total: 2</span>	Forbidden <span>for selected</span> <span>Total: 4</span>
<p>Drag computers here to track them</p> <p><b>Violations</b> <span>1</span></p> <p>Jupiter <span>not found</span> ✘</p> <p><b>Ok</b> <span>1</span></p> <p>Poseidon <span>found</span> ✘</p>	<p>Drag computers here to track them</p> <p><b>Violations</b> <span>0</span></p> <p><b>Ok</b> <span>4</span></p> <p>Dionysus <span>not found</span> ✘</p> <p>Apollo <span>not found</span> ✘</p> <p>Zeus <span>not found</span> ✘</p> <p>Hera <span>not found</span> ✘</p>

## Change log

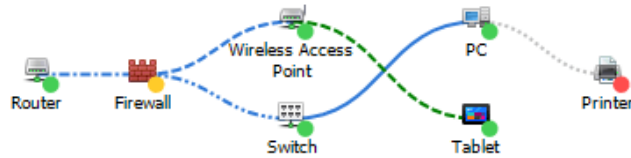
Detect and review hardware and software changes. See when an application is installed, uninstalled, or updated on any computer in your network, see hardware being connected or removed, storage usage dynamics, and much, much more.

	Philips 273EL (27inch Wide LCD MONITOR 273E3L)
	RAM slot #0 Capacity: 512 MB → 1024 MB
	JM20336 SATA, USB Combo



## Network Map

Visualize the structure of network devices the way it's convenient for you. Create a single map or split your network into many segments and levels, for different company sites, office floors, or other purposes.



## Task scheduler

Automate routine data collection and export tasks. Create both single and repeated tasks for pending scan sessions, reporting, data import, and export. Every day? On Fridays? On the first Monday of every month? Any time! Create a schedule for different tasks and keep your inventory up-to-date.

monthly in J F M A M J J A S O N D all months

on these days:

1	2	3	4	5	6	7	8	9	10
11	12	13	14	15	16	17	18	19	20
21	22	23	24	25	26	27	28	29	30
31	last day								

and

on

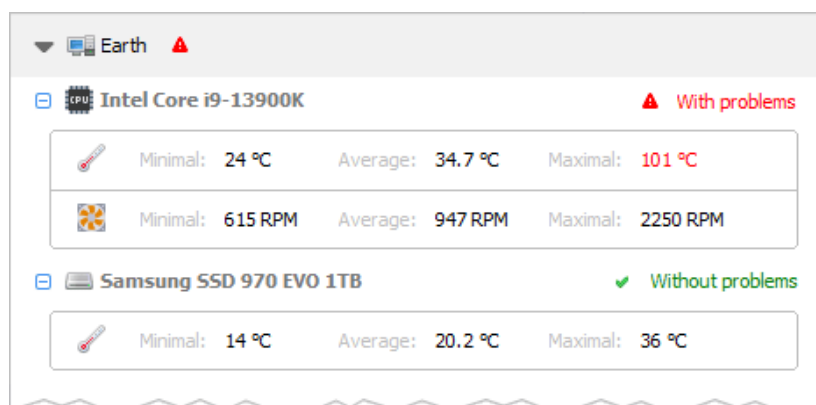
I	II	III	IV	last		
S	M	T	W	T	F	S

of the month



## Monitoring statistics

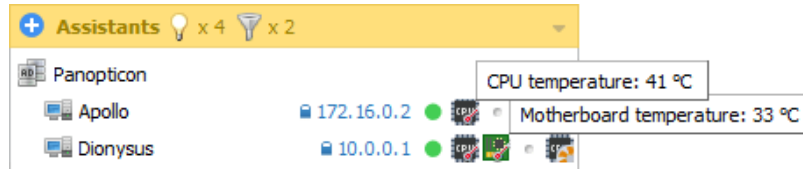
TNI 6 lets you continuously collect hardware component statistics without loading the scanned system. Analysis of the collected statistics for any period is available to owners of the Professional version in a "Sensors" mode with flexible filtering and convenient displaying of detected problems.





## And more...

Create a database of your network users; store multiple passwords for different assets and protocols; follow the online status of assets in real-time; schedule data collection; build network maps. These and many other TNI's features will save you a lot of effort and stress during network audits.



## Homepage

<https://www.softinventive.com/products/total-network-inventory>

## Price and terms

License prices for Total Network Inventory start at 90.00 USD. All users are entitled to free support and license renewals with a discount.

Read more on this page:

<https://www.softinventive.com/store/total-network-inventory>

## Company

Softinventive Lab was founded back in 2006 by a group of young enthusiasts seeking ways to apply their skills and knowledge, find their place in the sun and express themselves. Time flew by, turning mere desires into a passion.

### Address:

651 Holiday Drive, Foster Plaza 5, Suite 400, Pittsburgh, PA 15220, United States.

### Phones:

Pittsburgh: +1 (888) 447 2266

London: +44 (20) 7193 4266